



Towards Excellence ***– Our Foundation Trust Journey***

John Divall MBE
Foundation Trust Project Director





What do we do?

- **Emergency calls**
 - Community First Responders
- **Commercial services:**
 - Community Equipment Services
 - Commercial Logistics
 - Commercial Training
 - Out of Hours Services
 - Patient Transport Services





SCAS achievements

- Our Clinical Performance Indicators are the best in England
- Our response time performance is amongst the best in the country
- Less of our patients are taken to hospital than any other ambulance service in England. Instead many patients are directed towards other alternative sources of care more appropriate to their needs

Which means -

Right Treatment, Right Time, Right Place





Clinical Performance

- Provision (Cycle 5) data for this year indicates that SCAS remains overall top performing Ambulance Trust
 - 1st for STEMI, and Stroke.
 - 2nd for the management of cardiac arrest and asthma
 - 3rd for hypoglycaemia





Operational Performance

- Category A8 performance is 2nd best in England
- Emergency demand has increased by 3.07% over last year

A8	76.45%
A19	94.89%
B19	90.35%





	A8	75%	A19	95%	B19	95%
Berkshire East PCT	78.75%	07:36	97.37%	15:19	93.10%	21:29
Berkshire West PCT	76.27%	07:56	96.72%	16:39	92.62%	22:09
Buckinghamshire	67.07%	09:17	94.41%	20:09	90.54%	23:13
Milton Keynes PCT	84.56%	07:02	99.00%	13:05	97.81%	15:36
NHS Hampshire	73.25%	08:15	91.36%	22:38	86.34%	28:22
Oxfordshire PCT	76.45%	07:52	93.64%	20:19	91.23%	21:56
Portsmouth PCT	84.88%	06:54	97.60%	13:35	92.74%	21:55
Southampton PCT	81.99%	07:13	97.51%	14:44	89.57%	25:59
SCAS	76.45%	07:53	94.89%	19:10	90.35%	23:55





Growth in Emergency Demand

Berkshire East PCT	2.97%
Berkshire West PCT	0.87%
Buckinghamshire	2.03%
Milton Keynes	5.38%
Hampshire PCT	3.83%
Oxfordshire PCT	4.98%
Portsmouth PCT	2.02%
Southampton City PCT	0.66%
SCAS	3.07%





Non Conveyance Rates

	% Non conveyed
Berkshire East PCT	46.40%
Berkshire West PCT	52.45%
Buckinghamshire PCT	43.58%
Milton Keynes PCT	35.28%
NHS Hampshire	40.97%
Oxfordshire PCT	40.05%
Portsmouth PCT	40.12%
Southampton PCT	42.78%
SCAS	42.60%





Membership Recruitment

- Aiming to be a foundation trust from October 2011
- 14 week public consultation
- 17 public meetings
- 4 health fairs
- 6 Shopping Centre events
- Need to recruit 4,500 public members by April 2011 and 15,000 by April 2013





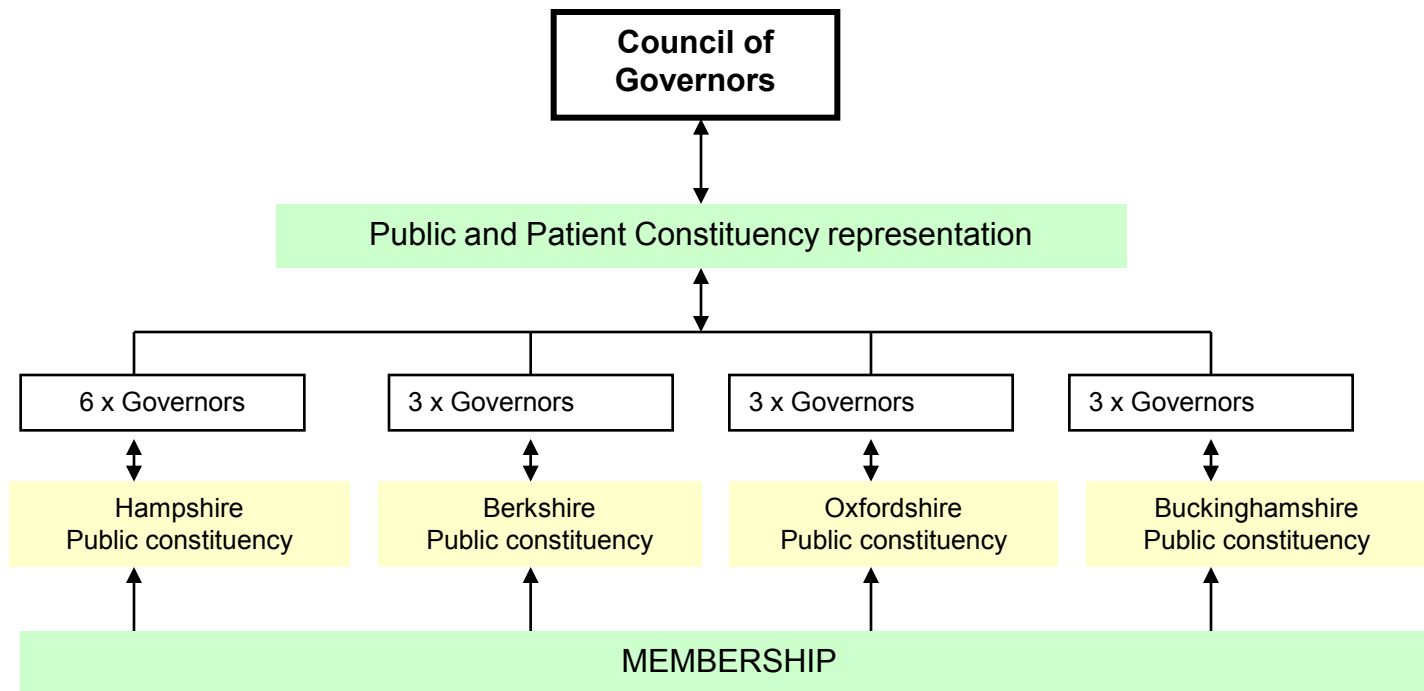
Public membership

- Membership is free and open to anyone over the age of 14 living within our region
- Governors (age 16 and over) are elected by members
- Seeking to recruit 4,500 members by March 2011, increasing to 10,000 by March 2012 and 15,000 a year later





Council of Governors



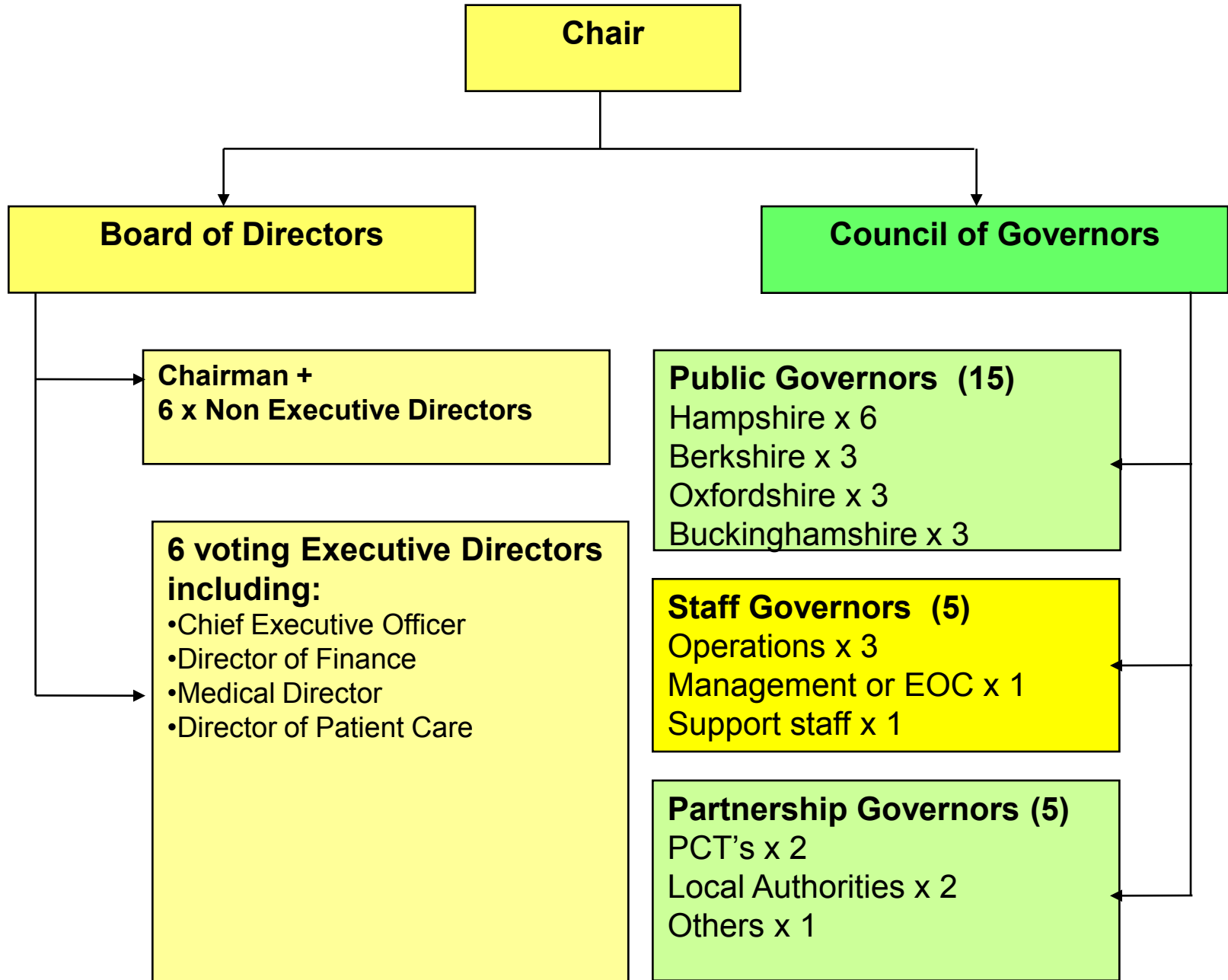


Public Constituencies

Combined public and patient constituency with 4 areas – one for each county



FT Board Level Structure





Your views on our plans

- 12 questions are outlined in the consultation document
- Respond by form in document - freepost
- Membership form attached - freepost
- Or online
<http://www.southcentralambulance.nhs.uk/foundation-trust/consultationform.ashx>





Any Questions?

Thank you for your time

